

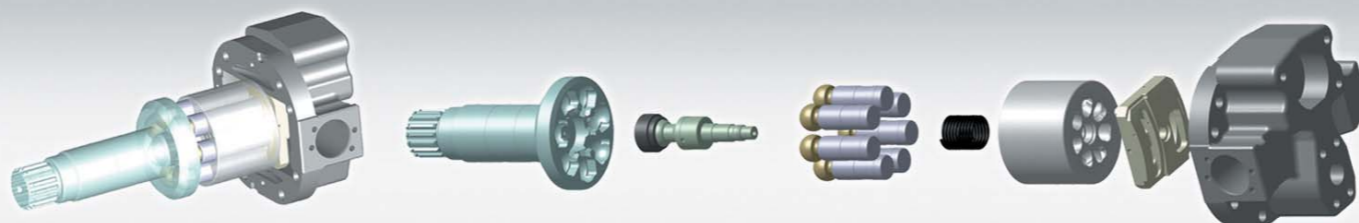
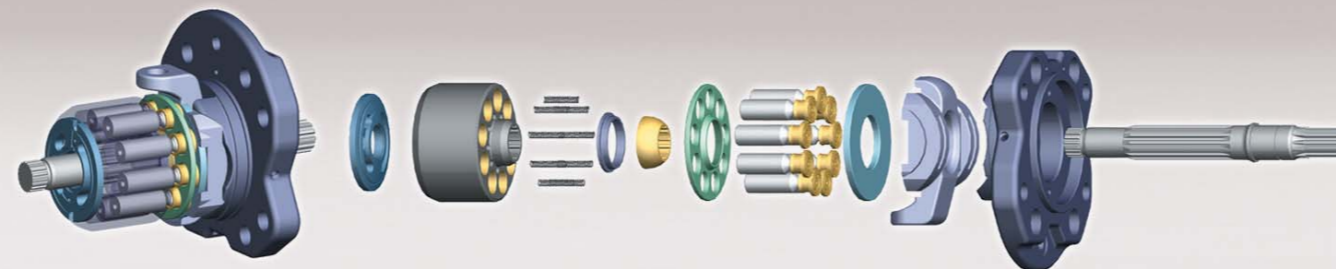
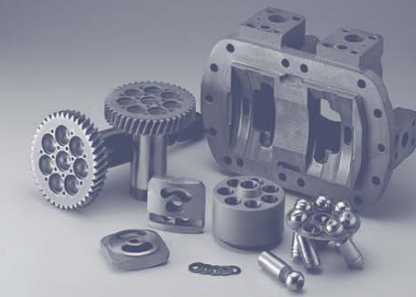
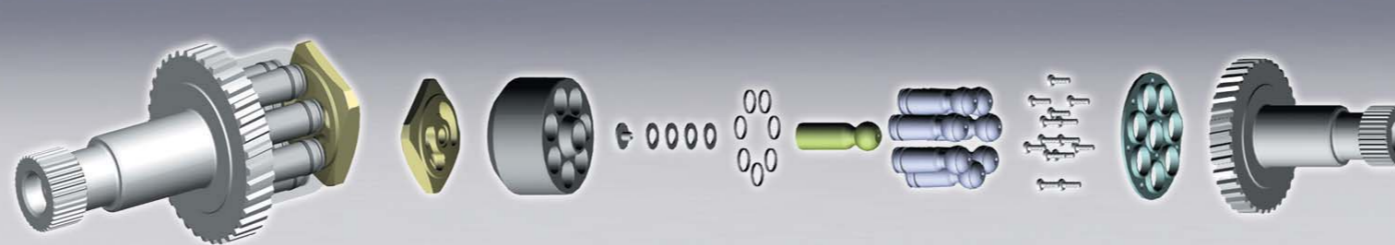
Hydraulic Gear Pumps



JCB, KOMATSU, CAT, KAWASAKI, FURUKAWA, MF, FERMEC, CASE, HIDROMEK, CUMITAS, TAMROCK, HYUNDAI, DRESSTA, TADANO, KATO, VOLVO, TEREX, BOSS, GROVE COLES CRANE, SPECIAL APPLICATION.....

JCB 3CX, 2004-2006	CAT 963 MAIN HYD.	GD655 /GREYDER	HIDROMEK (UPGRADE OF HPXS2001)	HYUNDAI HL 760-7
JCB 4CX, 2004-2006	CAT 942	KOM.D65 DOZER-MAIN PUMP	HIDROMEK (UPGRADE OF HPXS2005)	HYUNDAI 757-7
JCB 4CX, 2009	CAT 910	KOMATSU SCRAPER WS23	HIDROMEK-PROTOTYPE FOR 2007	HYUNDAI HL 730-7
JCB 3CX-FROM 40001	CAT 926 LOADER	KOM.D75S 3 DOZER	HIDROMEK-SIMPLE BHL 2010	HYUNDAI HL 760-7A
JCB 3CX	CAT DUMP TRUCK	KOM.D85 A18	HIDROMEK- BEFORE 2003	HYUNDAI HL 780-3 LOADER
JCB 3C,4C,3D11	CAT DUMP TRUCK D350 HAULER	KOM.D155A DOZER	HIDROMEK BRAKE PUMP	TEREX RIGID TRUCK - TA 30
JCB 3C/4C/3D11/3CS	D350/400 F DUMPER	KOM.D355A-3 DOZER	DRESSTA LOADER	TEREX MODEL 33 100C RIGID TRUCK
JCB 3CX 4*4	MF-50B- (334E)/MF50HX-EX	KOM.W90-2 TRANSMIS.	DRESSTA LOADER 534, 534C and 534E	TEREX - 15244376
JCB 3D	CAT/735-740 HAULERS	KOM120-1/3 TRANSMIS.	DRESSTA 540 LOADER/ZETTELMEYER LOAD.	TEREX DUMPER PUMP
JCB 3D5 - ESCORTS	CAT 40 TONE HAULER TRUCK	KOM.120-2 LOADER-MAIN PUMP	DRESSTA 34B LOADER	TEREX PEGSON METRO
JCB 3D - ESCORTS	TAMROCK DHA 400-500	KAWASAKI Z70 (Z85 new machine)	DRESSTA WHEELED LOADER 540 B	TEREX EQUIPMENT LIMITED
JCB 3D 2001-2006 B/L INDIA	TAMROCK 400- 500 - 935E	KAWASAKI Z70	DRESSTA 560X LOADER	TEREX FINLAY RECLAIMER 883
JCB 3DX	TAMROCK 500 FRONT P	KAWASAKI 65ZV	DRESSTA / HUTA STALOWA LOADING	VOLVO BM 1240
JCB 3CX 1998-2001	TAMROCK 500 SECOND + REAR	KOM. 505 GREYDER	DRESSTA L34 LOADER	VOLVO-565D DUMP TRUCK
JCB 3CX FRONT PUMP	TAMROCK 400-500	GD705-A4 (HYDRAULIC)	DRESSTA	VOLVO BM 4200 LOADER
JCB 3CX REAR PUMP	TAMROCK 400-500 SECOND	GD705-A4 (TRANSMISSION)	DRESSTA LK-1	VOLVO 840 LOADER
JCB 3CX-FROM 40002	TAMROCK 400-500 THIRD	KOMATSU GD705A-4	Dressta L-34 main pump	VOLVO LM 1641
JCB 3CX	TAMROCK H207 B	WA420 (TRANSMISSION)	Dressta LK-1 yürüyüş pompası	CASE 580-1
JCB 3CX 1998-2001	TAMROCK H207 B FRONT PUMP	WA200 MAIN HYD PUMP-WA320 GEARBOX	GROVE COLES CRANE AT880	CASE 580 G WHEEL LOADER
JCB 3CX-410292	TAMROCK H207 B SECOND PUMP	KOMATSU DUMP PUMP	KAWASAKI 85ZIII (1995 model)	CASE 580 K TDL
JCB 1700B	TAMROCK H207 B REAR PUMP	KOM - WA450	KAWASAKI Z85	CASE 580SL
JCB [A0119131521]	TAMROCK DHA 600	KOM120 MAIN / KOM420-1 TRANS	KAWASAKI 85 ZII	CASE 580SL new machine / NEW HOLL.
JCB 3CX, 2001-2004	TAMROCK DHA 600 FRONT PUMP	KOM WA-450	KAWASAKI Z80	CASE 690 new machine / NEW HOLL.
JCB 4CX, 2001-2004	TAMROCK DHA 800	KOMATSU MOXY	KAWASAKI 70B	CUMITAS MECH. SET
JCB 4CX New	TAMROCK DHA 800 REAR PUMP	KOMATSU HANOMAG L600D	KAWASAKI Z85 OLD TYPE	CUMITAS HYDRA. SET
KOM.120-2 LOADER-GEARBOX	HL 538	KOMATSU HANOMAG WA270-3	KAWASAKI Z80-Z70B-1	CUMITAS SIMPLE BHL MEC. SET
KOM.420-1 (WA400-1)	HL 538 FRONT PUMP	KOMATSU HANOMAG	KAWASAKI 70B TRANSMISSION PUMP	CUMITAS 885,888
KOMATSU WA420 NEW MACHINE	HL 538 SECOND PUMP	KOMATSU HANOMAG D600C DOZER	KAWASAKI 70B + FRKW 230	CUMITAS 883,885,888/MASTAS M4/SB
JCB 3CX B/L	HL 538 REAR PUMP	KOMATSU HANOMAG WA380/420	KAWASAKI 70B + FRKW 231	CUMITAS 883,885,888 - 2010
JCB 4CX	DRESSTA 560X LOADER	KOMATSU HANOMAG WA380/421	KAWASAKI 70B	CUMITAS SIMPLE BHL
JCB 3C/3D/3CM	DRESSTA 534E / TD40	KOMATSU HANOMAG WA270	KAWASAKI Z85	CUMITAS 883,885,888 - BEFORE 2007
JCB 3CX-P7/P8	DRESSTA --- FRONT PUMP	KOMATSU HANOMAG WA270 PT	KAWASAKI B 70	TADANO CRANE TG350E
JCB 4CX-P8	DRESSTA --- REAR PUMP	KOMATSU MINING	KAWASAKI Z85-1990	TADONO CRANE TL250E
JCB BM	DRESSTA TD40	KOMATSU WA600 MAIN HYD.PUMP	KAWASAKI 90Z (1995-1998 model)	KATO VINC POMPASI
JCB 428	TAMROCK 500	KOMATSU WA600 TRANSMISSION PUMP	KAWASAKI Z 95	KATO NK 250E-III VINC
JCB 3C111	TAMROCK 500 FRONT PUMP	KOMATSU WA470-5	KAWASAKI 110	KATO (YADAK HYD)
JCB B/L STEERING PUMP	TAMROCK 500 SECOND + REAR PUMP	KOMATSU WA380 NEW MACHINE	KAWASAKI 95Z-5 / CVS FL 4212 FLT	KATO NK 750
JCB 812 814	TAMROCK 105M	KOMATSU MINING	KAWASAKI 80Z	KATO CRANE
JCB 400	TAMROCK 105M - FEEDPUMP	KOMATSU MINING - EXCAVATOR	KAWASAKI 95 ZII	ZETTELMEYER LOADER
JCB 416/430 Z	TAMROCK Toro T150D	MF50-50D	KAWASAKI 97Z	ZETTELMEYER LOAD. - 2001
JCB 410/412	TAMROCK T35D/T40D	MF-50B- (334E)/MF50HX-EX	FRUKAWA - FL	ZETTELMEYER LOAD.
JCB 410/412/415/423	TAMROCK 850	MF-50B- (334E)/MF50HX-EX	FRUKAWA - FL 120,120A,150,170,170A	FIAT ALLIS FR15 DOZER
JCB 812/814	TAMROCK TORO DUMPER T35D/T40D	MF 60H,60NX	FRUKAWA - FL 230,230-1,230-II	FIAT ALLIS FH20 DOZER
JCB 425	TAMROCK TORO LOADER	MF 860-960	FRUKAWA - 230	FIAT ALLIS F30 DOZER
JCB 808	KOM.420 NEW	MF-50B- (334E)/MF50HX-EX	FRUKAWA - 231	GROVE COLES CRANE AT865/AT875
JCB 807	KOM.420 NEW REAR PUMP	M.FERGUSON	HYUNDAI HL 757-7	GROVE COLES CRANE AT880/AT865
JCB 804-805-806	KOM.420 NEW KOMATSU WA500	MF-44C/55C/C44C/C55C	HYUNDAI HL 760-7 LOADER	GROVE COLES CRANE AT880/AT875
JCB 806C	KOM.420 NEW TRANS.	MF-77C/77D	HYUNDAI HL 770-3	GROVE COLES CRANE AT9120/870 75T
JCB 806C	KOMATSU HD 465 -3	MF44C -OLD PUMP	HYUNDAI HL 760 WHEELED LOADER	GROVE COLES CRANE AT1100/TT865
JCB 811	KOMATSU 420 OLD	MF44C -NEW PUMP	HYUNDAI 760 LOADER (1996)	GROVE COLES CRANE AT990/9120
JCB-520 TELESCOPIC HANDLER	KOMATSU 420/FRONT PUMP	FERMEC 960 NEW 2002 ve öncesi	HYUNDAI HL 730-7	GROVE COLES CRANE AT1100
MOXY - MT40 B + COLES AT633/RT45	KOM. 320-3 NEW	FERMEC 750-860 2002 ve öncesi	HYUNDAI HL 740-7	GROVE COLES CRANE RTs
MOXY - MT40 B HAULER	KOMATSU 320 - WA 320	FERMEC 750-860-960	HYUNDAI HL 780-3 LOADER	GROVE COLES CRANE RTs & RT625
MOXY - HAULER TRUCK	KOMATSU WA 320-1 - NEW DESIGN	FERMEC 860-960	HYUNDAI HL 760 WHEEL LOADER	GROVE COLES CRANE 33/36T
MOXY - MT36 DUMPER	KOMATSU 320 - 5 LOADER	FERMEC-TEREX 860-960	HYUNDAI HL 757-7A	GROVE COLES CRANE AT880/AT875
FAI KOMATSU - WB97R	KOMATSU 320 - 5 LOADER - NEW	FERMEC 860-960	HYUNDAI HL 780-3	GROVE COLES CRANE RT620 kits

World best products



KUKJE HYDRAULIC CO., LTD.

#9, 460 Oncheon-ro, Paltan-myeon, Hwaseong-si, Gyeonggi-do, 18530, KOREA

Tel : +82-31 409 0746

Fax : +82-31 409 5290

E-mail : kjc@kjchdraulic.com

Url : <http://www.kjchdraulic.com>



KUKJE HYDRAULIC CO., LTD.

KJC

Greeting



We paved the way for new takeoff by moving to new factory in December 2006 owing to your affectionate attention and support given for a long time.

We have contributed to customers over the world and national economy by exporting products, taking a role in hydraulic industry development of our country since company establishment. We, Kukje Hydraulic Co.,Ltd are aiming at company which lead change and development of technology and society by dashing forward to continuous operation

innovation and technology development and cultivating man of talent. And we will also fulfill continuously customer-oriented operation and become a model to contribute to society by supplying top product and service.

We, Kukje Hydraulic Co.,Ltd promise to become credible partner to get respect from customer higher than customer satisfaction, taking the point of view of customer one more.

Yours faithfully,

Lee, Sung-Nam, President

History

- 1996. 11. Founded as Kukje Hydraulic Co.,Ltd (898-10 Hogae-Dong , Anyang City)
- 1999. 03. Registered as Government export centers Invest list of promising company.
- 2000. 07. Joint Technical Cooperation with Daewoo (Doo San Infracore)
- 2002. 08. ISO 9001 Certificated
- 2002. 11. Certified research and development department (Korea Industrial Technology Association)
- 2003. 05. Selected as specialized companies in Components and Materials
- The Ministry of Commerce, Industry and Energy (MOCIE)
- 2004. 08. Patent registered for the bonding method through the bronze alloy semisolid area
- 2005. (Patent No. 0460618)
- 2006. 07. OES product supply agreement with Kobelco
- 2007. 03. Agreement with PSM (Europe) as OEM (56cc & 112cc pump parts/ 30,000 unit).

- 2008. 03. Contract with Sung Bo P&T. (OEM production for Hydraulic Motor Parts)
- 2011. 05. Agreement with Korean Air-Force for component development
- 2012. Hydraulic Gear Pump Supply
Contract with 4 companies in Europe and a company in Japan. (OEM production for Hydraulic Pumps Parts)
- 2013. Hydraulic Main Pump Supply



Major Products

Core Parts of Hydraulic Pumps & Motors

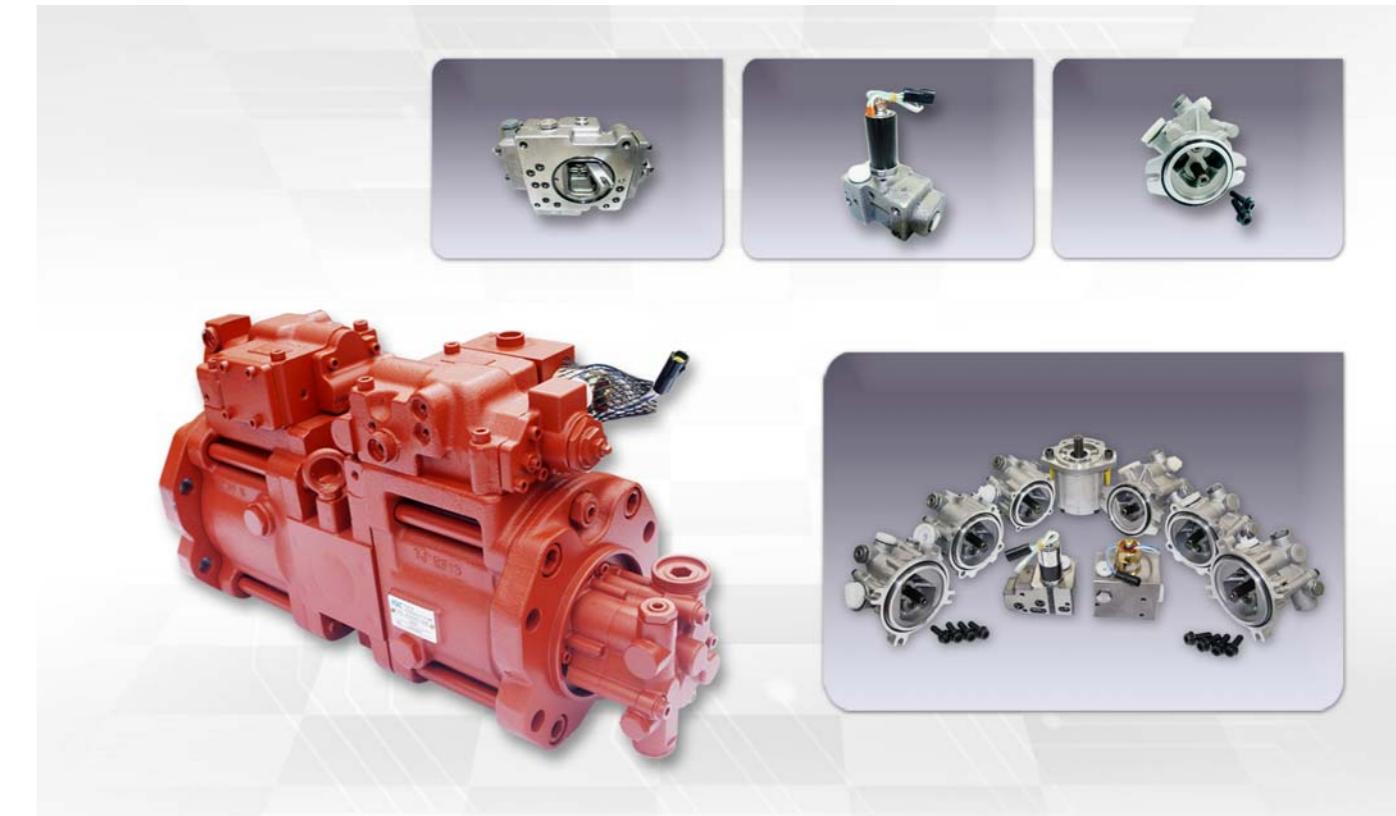
- Cylinder Block
- Piston Assembly
- Shaft

- Support & Swash Plate
- Valve Plate
- Retainer Plate & Ball Guide etc.

- OEM Parts
- OES Parts

Maker	Series
CATERPILLAR	12G, 14G
	225, 320, 330
	PVD SERIES
DAIKIN/SUNDSTRAND	SPV / M SERIES
	GM SERIES
DEIJIN SEIKI	HPV SERIES
	NV SERIES
HITACHI	NVK SERIES
	K3V SERIES
KAWASAKI	KVC SERIES
	M2X SERIES
	MX SERIES
	DNB SERIES
	MAG SERIES
KAYABA	HPV SERIES
KOMATSU	HPV SERIES
LINDE	HPR SERIES
	B2PV SERIES
MITSUBISHI	SPV 10/10
	SPK 10/10
	PPS 140
SHIBAURA/TOSHIBA	DP 105
	AP-12
UCHIDA/HYDROMATIC/REXROTH	SG/MFB SERIES
	A2F SERIES
	A3V SERIES
	A4V SERIES
SHIBAURA/TOSHIBA	A6V SERIES
	A7V SERIES
	A8V SERIES
	A10V SERIES

Hydraulic Main Pumps



Product Series

CAT 12G/14G	PVD/SPV/M	HPV 125B	HPV 95/132	HPV SERIES	HPV116 & HPV145
NV SERIES	NVK 45DT	K3V SERIES	KMF 90	KVC SERIES	HPR 130/160
HPR 100	SPK 10/10	SPV 10/10	A2F/A3V SERIES	A7VO SERIES	A8V SERIES
A10V SERIES	M2X SERIES	HPV091 SERIES			

Main Pump List

NO	TYPE	MAKER	MACHINE	REMARK
1	K3V63DT-111R-6N03A-2	DOOSAN	DH120W-2,S130W	
2	K3V63DT-100R-HNDV	DOOSAN	S130LC-V	
3	K3V112DT-112R-9N02	DOOSAN	DH170	
4	K3V112DT-112R-9C02	DOOSAN	DH220LC	
5	K3V112DT-1CGR-HN0P	DOOSAN	S220-3	
6	K3V112DT-1CGR-HN0DV	DOOSAN	S220-V	
7	K3V112DT-1CGR-HN0C	DOOSAN	DH225-3	
8	K3V140DT-1A2R-9N09	DOOSAN	DH280	
9	K3V140DT-1UGR-HN1P	DOOSAN	S280LC-3	
10	K3V140DT-1UGR-HN02	DOOSAN	S290LC-V	
11	K5V140DTP-1D9R-9N01	DOOSAN	S300LC-V	without PTO
12	K5V140DTP-1N9R-9N07-V	DOOSAN	DX300LC	without PTO
13	K3V180DT-1PGR-HL0P	DOOSAN	S320LC	
14	K3V180DT-1PGR-HN0P	DOOSAN	S330-3,S330-V	
15	K3V180DT-1PGR-HN1P	DOOSAN	S330-V	
16	K3V180DT-1PGR-HN07	DOOSAN	S360-V	
17	K3V180DT-1PGR-HNDV	DOOSAN	S400-3	
18	K3V180DT-1PGR-HN1V	DOOSAN	S450-3,S450-V	
19	K3V180DT-1PGR-HN2V	DOOSAN	S400-V	
20	K3V63DT-1RCR-9N03-1	VOLVO	MX132LC	
21	K3V63DT-1R0R-9N0T	VOLVO	MX135,MX135W-3,EC140	
22	K3V63DT-1Y0R-9N0T	VOLVO	MX135	
23	K3V63DT-1ZDR-9N0T-ZV	VOLVO	EC140B	
24	K5V80DT-1PDR-9N0Y-ZV	VOLVO	EC150	without PTO
25	K5V80DT-1PDR-9N0J-ZV	VOLVO	EW145B	without PTO
26	K3V112DT-1RCR-9N09	VOLVO	MX222,MX202W	
27	K3V112DT-1XER-9N24-2	VOLVO	MX225,EC210,EC240	
28	K3V112DT-1XER-9N2A-2	VOLVO	MX255,EC240,EC240B	
29	K3V140DT-1RCR-9N19	VOLVO	MX292,MX10LC-2	
30	K3V140DT-1JER-9N04-1	VOLVO	MX295,EC290,EC290B	
31	K3V180DT-1PCR-9N46	VOLVO	MX352,MX14LC	
32	K3V180DT-1PER-9N56	VOLVO	EC360,EC360B,EC440	
33	K3V180DT-1PDR-9N05	VOLVO	MX452	
34	K3V180DTH-1POR-9N0B	VOLVO	MX455,EC450	
35	K3V63DT-1R0R-9P05-A	HYUNDAI	R1300W	
36	K3V63DT-1R0R-9N01-2A	HYUNDAI	R130LC-3	
37	K3V63DT-1R0R-9N15-B	HYUNDAI	R160LC-3	
38	K3V63DT-1R0R-9C15-1C	HYUNDAI	R1400LC-7,R140LC-7	
39	K3V63DT-1R0R-9C05-1D	HYUNDAI	R1400LC-7,R140LC-7	
40	K5V80DTP-1PCR-9C05	HYUNDAI	R160LC-7,R180LC-7	
41	K5V80DTP-1JGR-9N05-1	HYUNDAI	R1300WM	with PTO
42	K5V80DTP-1JGR-9C05-1A	HYUNDAI	R170W-7	with PTO
43	K3V112DT-1R2R-9N09-6A	HYUNDAI	R2000LC,R200	
44	K3V112DT-1RER-9C39-1	HYUNDAI	R210LC-3,R210-EM	
45	K3V112DT-1RER-9C39-2	HYUNDAI	R210LC-3,R210-EM	
46	K3V112DT-1CER-9C32-1	HYUNDAI	R210LC-7	
47	K3V112DT-1R5R-2N19	HYUNDAI	R200-E,R210LC-5	
48	K3V112DT-17ER-9N3P	HYUNDAI	R215LC-7	
49	K3V112DT-1RER-9C59	HYUNDAI	R200W-3	
50	K3V140DT-1R2R-9N29-A	HYUNDAI	R2800LC,R290LC-3	
51	K3V140DT-1CER-9C12-C	HYUNDAI	R305LC-7	
52	K3V140DT-1CER-9C12-D	HYUNDAI	R290LC-7	
53	K5V140DTP-1H9R-9C12	HYUNDAI	R3000LC-7	without PTO
54	K5V140DTP-1H9R-9C09	HYUNDAI	R290LC-7	without PTO
55	K3V140DT-1R2R-9N39-A	HYUNDAI	R320LC-3	
56	K3V180DT-1RER-9N69-B	HYUNDAI	R320LC-3	
57	K3V180DT-1RER-9C69-D	HYUNDAI	R320LC-7	
58	K3V180DTH-1POR-9N15-A	HYUNDAI	R3600LC-3,R360LC-3	
59	K3V180DTH-1POR-9C05-A	HYUNDAI	R3600LC-7,R360LC-7	
60	K3V180DTH-1NOR-FN05-1	HYUNDAI	R4500LC-3,R450LC-3	
61	K5V200DTH-1HJR-9C02-V	HYUNDAI	R450-7	
62	K3V63DT-1R0R-9N0H	HALLA	HE130LC	
63	K3V112DT-1RGR-HN0P	HALLA	HE220LC	
64	K3V140DT-1R2R-9N19-2	HALLA	HE280LC	
65	K3V180DT-1PMR-9N0G-1	HALLA	HE360LCH	
66	K3V180DTH-1POR-9N0Z	HALLA	HE450LCH	